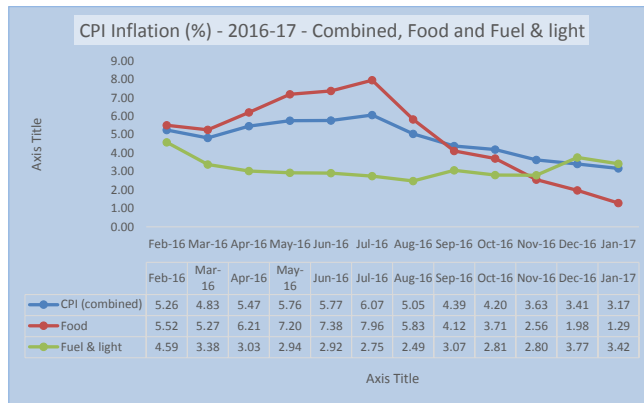


Consumer Price Index (Combined) for Major Commodities

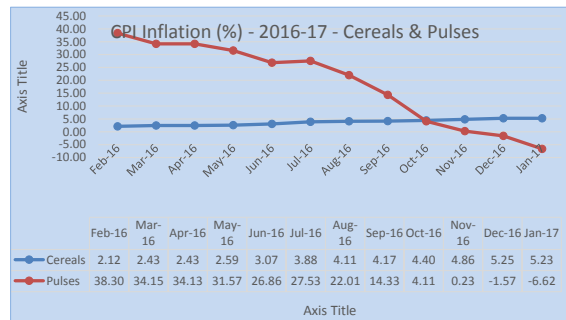
| Month | CPI (combined) | Food | Fuel & light |
|--------|----------------|------|--------------|
| Feb-16 | 5.26 | 5.52 | 4.59 |
| Mar-16 | 4.83 | 5.27 | 3.38 |
| Apr-16 | 5.47 | 6.21 | 3.03 |
| May-16 | 5.76 | 7.20 | 2.94 |
| Jun-16 | 5.77 | 7.38 | 2.92 |
| Jul-16 | 6.07 | 7.96 | 2.75 |
| Aug-16 | 5.05 | 5.83 | 2.49 |
| Sep-16 | 4.39 | 4.12 | 3.07 |
| Oct-16 | 4.20 | 3.71 | 2.81 |
| Nov-16 | 3.63 | 2.56 | 2.80 |
| Dec-16 | 3.41 | 1.98 | 3.77 |
| Jan-17 | 3.17 | 1.29 | 3.42 |

Jan 17 - Provisional



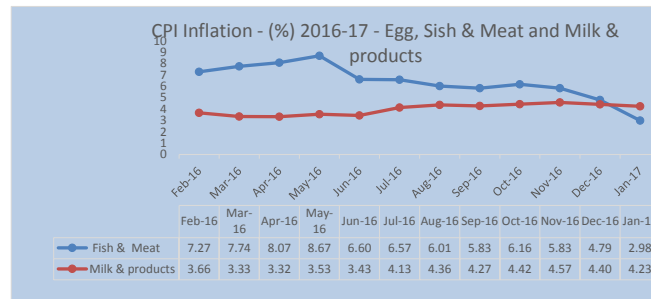
| Month | Cereals | Pulses |
|--------|---------|--------|
| Feb-16 | 2.12 | 38.30 |
| Mar-16 | 2.43 | 34.15 |
| Apr-16 | 2.43 | 34.13 |
| May-16 | 2.59 | 31.57 |
| Jun-16 | 3.07 | 26.86 |
| Jul-16 | 3.88 | 27.53 |
| Aug-16 | 4.11 | 22.01 |
| Sep-16 | 4.17 | 14.33 |
| Oct-16 | 4.40 | 4.11 |
| Nov-16 | 4.86 | 0.23 |
| Dec-16 | 5.25 | -1.57 |
| Jan-17 | 5.23 | -6.62 |

Jan 17 - Provisional



| Month | Fish & Meat | Milk & products |
|--------|-------------|-----------------|
| Feb-16 | 7.27 | 3.66 |
| Mar-16 | 7.74 | 3.33 |
| Apr-16 | 8.07 | 3.32 |
| May-16 | 8.67 | 3.53 |
| Jun-16 | 6.60 | 3.43 |
| Jul-16 | 6.57 | 4.13 |
| Aug-16 | 6.01 | 4.36 |
| Sep-16 | 5.83 | 4.27 |
| Oct-16 | 6.16 | 4.42 |
| Nov-16 | 5.83 | 4.57 |
| Dec-16 | 4.79 | 4.40 |
| Jan-17 | 2.98 | 4.23 |

Jan 17 - Provisional



| Month | Vegetables | Fruits |
|--------|------------|--------|
| Feb-16 | 0.70 | #NAME? |
| Mar-16 | 0.54 | -1.10 |
| Apr-16 | 4.82 | 1.66 |
| May-16 | 10.77 | 2.64 |
| Jun-16 | 14.74 | 2.64 |
| Jul-16 | 14.06 | 3.53 |
| Aug-16 | 1.02 | 4.46 |
| Sep-16 | -7.21 | 6.07 |
| Oct-16 | -5.74 | 4.42 |
| Nov-16 | -10.29 | 4.60 |
| Dec-16 | -14.59 | 4.74 |
| Jan-17 | -15.62 | 5.81 |

Jan 17 - Provisional

Note: Base 2012 = 100

Source: Central Statistics Office, Ministry of Statistics and Programme Implementation, Government of India

